

LC3600 Preparative HPLC



The system is integrated design, the mobile phase delivery unit, detection unit and fraction collection unit is integrated in one set of shelves. It is beautiful and generous, the dead volume of the pipe connection is reduced and the column efficiency is significantly improved. All wetted material is metal!free for bio-molecular purification.

System configuration	
Pump /Max. pressure	100ml pump head 30Mpa 250ml pump head 15Mpa 500ml pump head 10Mpa 1000ml pump head 10Mpa
Detector	UV detector/or RI detector
Fraction collector valve	Azura 2.1L, 6 channels or 12 channels
Online filter	48mm or 100mm filter
Sample valve	A1360 sample injection valve
Mixing	Preparative maxing chamber
Frame and tube	System frame, converter, tube
Software	Clarity from DataApex
Kit	System start!up kit and accessories kit
Document	User manual, IQ/OQ/PQ

Note:

- 1.The mobile phase or sample selection valve is optional in system
- 2.Fraction collector valve is standard configuration. The alternative is fraction collector.
- 3.The flow cell of detector match flow rate of system
4. Sample pump is an optional in the system

ATL ---Focus on the research of HPLC over 16 years!

ATL ---Manufacture HPLC from lab scale to production scale!

ATL ---Industrial scale HPLC systems manufacturer with professional R&D and production facilities!

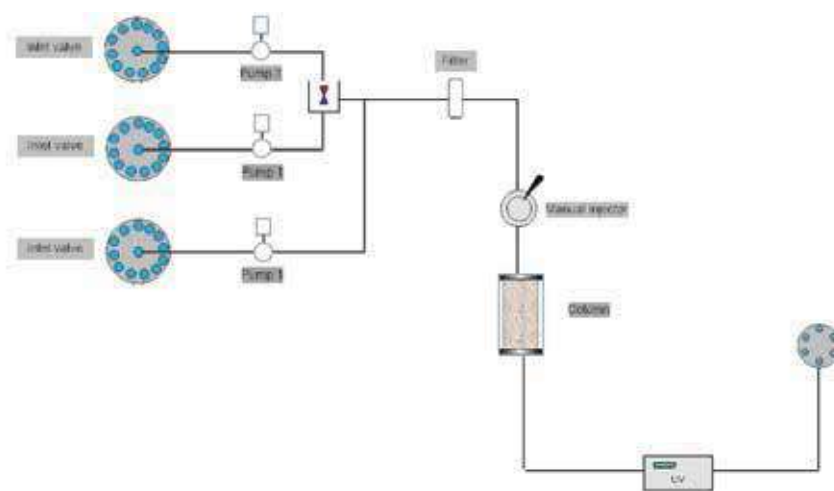
ATL ---Contact purification and solution for our customers!"

ATL ---We are experienced project contractor

LC3600 Preparative HPLC

SYSTEM REQUIREMENTS

Dimension	500mm*320mm*700mm
Communication	LAN
System connection	Ferrule
Wetted material	PEEK and PTFE etc.
Power	Less than 1500W



The Flow path of LC system
Analytical Technologies Limited

ATL ---Focus on the research of HPLC over 16 years!

ATL ---Manufacture HPLC from lab scale to production scale!

ATL ---Industrial scale HPLC systems manufacturer with professional R&D and production facilities!

ATL ---Contact purification and solution for our customers!

ATL ---We are experienced project contractor

P6000 PUMP	0.1~99.9ml /min	30Mpa
	0.1~249.9ml /min	15Mpa
	0.1~499.9ml/min	10Mpa
	0.1~999.9ml/min	10Mpa
Pressure pulsation	1%! at 10Mpa	
Flow rate accuracy	±1%	
Flow rate reproducibility	RSD≤0.5	
Gradient accuracy	±2%	
Pump inlet tube	Φ4 (100ml, 250ml, 500ml) Φ6 (1000ml)	
Pump outlet tube	1/8" (100ml, 250ml, 500ml) DN4 (1000ml)	

LC3600 Preparative HPLC

ATL ---Focus on the research of HPLC over 16 years!

ATL ---Manufacture HPLC from lab scale to production scale!

ATL ---Industrial scale HPLC systems manufacturer with professional R&D and production facilities!

ATL ---Contact purification and solution for our customers!

ATL ---We are experienced project contractor

sample pump	
Flow rate	0.1~49.9ml /min 30Mpa
Pressure pulsation	1% at 10Mpa
Flow rate accuracy	±1%
Flow rate reproducibility	RSD≤0.5
Pump inlet tube	Φ3
Pump outlet tube	1/16"

UV DETECTOR	
Wavelength range	190-400nm, 400!800nm
Band width	8nm
Wavelength accuracy	±2nm
Wavelength reproducibility	0.4nm
Baseline noise	3x10!5Au
Base line draft	1x10!4Au/h
Flow cell	1/16", PEEK, optical path 10mm
PH Sensor Range	0 to 14
Conductivity sensor range	0 to 900ms.cm

SELECTION VALVE	
Valve type	6 ports multi!position
Valve head material	PEEK/PPS
Rotor seal material	vespel
Maximum pressure stability	150BAR
Capillary connection	1/8"

FRACTION VALVE	
Valve type	6 ports multi!position
Valve head material	PEEK/PPS
Rotor seal material	vespel
Maximum pressure stability	150BAR
Capillary connection	1/8"

LC3600 Preparative HPLC

ATL ---Focus on the research of HPLC over 16 years

ATL ---Manufacture HPLC from lab scale to production scale!

ATL ---Industrial scale HPLC systems manufacturer with professional R&D and production facilities

ATL ---Contact purification and solution for our customers!

ATL ---We are experienced project contractor

SOFTWARE	
Package	ClarityChrom
compliance	21CFR Part 11 compliance
Operating system	Windows XP SP3, Windows Vista SP2 32!bit and 64!bit, Windows 7 32!bit and 64!bit, Windows 8 32!bit and 64!bit Windows 10 (32 and 64 bit)
Multi!user environment	Selectable system of user accounts with independently customizable behavior and appearance for individual users
Instrument connection	Supports RS!232, Ethernet, PCI interface card, A/D!D/A interface
Recommended PC hardware !	Pentium 2 GHz, 2 GB RAM, 10 GB free hard disk space, separate graphics card if one PC should control more than one system
Graphics capabilities	Multiple chromatogram view and overlay, PDA view
Integration	27 integration parameters (peak width, threshold, tangent slope ratio etc.) integration parameters programmable in time, automatic re!integration
Security and GLP	Installation qualification test of the software; FDA 21 CFR Part 11 conformance, validation with virtual detector
Instrument control	method!based instrument control, Instrument status display and Direct!Control mode
Chromatogram operations	Overlay view, custom labels and settings, also applying mathematical operations to chromatograms
Automation	Sequences, automatic launch of selected commands or applications immediately following chromatogram acquisition – Post run, Batch
FRC option	for preparative HPLC, adds tools for detector controlled fraction collection and solvent recycling
FRC features	Fractionation can be controlled by time (volume), level, slope including AND/OR combination of these criteria, manual control of fractionation during a run
System suitability test	automates the calculation of system suitability parameters for system validation

Support & Services

HPLC Servicing, Validation, Trainings and Preventive Maintenance :

- HPLC Servicing** :We have team of service engineers who can attend to any make of HPLC promptly @the most affordable cost.
- Trainings** :We also take up preventive Maintenance to reduce downtime of HPLC's
- AMC's/CMC** :We offer user training both in-House and at customer sites on HPLC principles, operations, troubleshooting.
- Validations** :We have protocols for carrying out periodic Validations as per GLP/GMP/USFDA norms
- Instruments** :We offer instruments / Renting Services Modules like pumps, detector etc. on Rent.



About Analytical Technologies

Analytical Technologies is synonymous for offering technologies for doing analysis and is the Fastest Growing Global Brand having presence in at least 96 countries across the globe. Analytical Technologies Limited is an ISO :9001 Certified Company engaged in Designing, Manufacturing, Marketing & providing Services for the Analytical, Chromatography, Spectroscopy, Bio Technology, Bio Medical, Clinical Diagnostics, Material Science & General Laboratory Instrumentation. Analytical Technologies, India has across the Country operations with at least 4 Regional Offices, 6 Branch Offices & Service Centers. Distributors & Channel partners worldwide.

About Analytical Technologies



LC3600
Preparative
HPLC

ATL ---Focus on the research of HPLC over 16 years

ATL ---Manufacture HPLC from lab scale to production scale!

ATL ---Industrial scale HPLC systems manufacturer with professional R&D and production facilities

ATL ---Contact purification and solution for our customers!

ATL ---We are experienced project contractor

Regulatory compliances



Corporate Social Responsibility

Analytical Foundation is a Nonprofit Organization (NGO) found for the purpose of:



Analytical
Foundation

1. Research & Innovation Scientist's awards / QC Professional Award: Quality life is possible by innovation only and the innovation is possible by research only, hence ANALYTICAL FOUNDATION is committed to identify such personalities for their contributions across various field of Science and Technology and awarding them yearly. To participate for award, send us your details of research / testing / publication at info@analyticalfoundation.org

2. Improving quality of life by offering YOGA Training courses, Work shops / Seminars etc.

3. ANALYTICAL FOUNDATION aims to DETOXYFY human minds, souls and body by means of Yoga, Meditation, Ayurveda, Health Care, Awards, Media, Events, Camps etc.

Reach us @



HPLC Solutions MultipleLabs Analytical Bio-Med Analytical Distributors Analytical Foundation (Trust)

Corporate & Regd. Office:
Analytical House, # E67 & E68,
Ravi Park, Vasna Road, Baroda,
Gujarat 390 015. INDIA

T: +91 265 2253620
+91 265 2252839
+91 265 2252370
F: +91 265 2254395

E: info@hplctechnologies.com
info@multiplelabs.com
info@analyticalgroup.net
info@analyticalbiomed.com

W. www.ais-india.com
www.analyticalgroup.net
www.hplctechnologies.com
www.multiplelabs.com

Sales & Support Offices:
across the country :
Distributors & Channel
partners World Wide

Note : Company reserves rights to add/delete/modify the contents / technical specifications of the catalogue without prior notice.